



FOR YOUTH DEVELOPMENT®
FOR HEALTHY LIVING
FOR SOCIAL RESPONSIBILITY

2020

Corporate Membership

YMCA OF GREATER
FORT WAYNE



HEALTHIER EMPLOYEES, HEALTHIER BUSINESS.

DID YOU KNOW? In The Typical American Workplace:



60%

are overweight
and sedentary



59%

don't exercise
enough¹



50%

have high
cholesterol



27%

have cardiovascular
disease



24%

have high
blood pressure

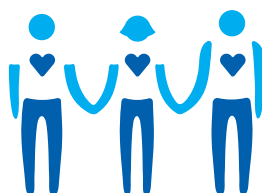
THE Y IS HERE TO CHANGE THAT!



GETTING STARTED

- Create a culture of health.

The Y is your partner in health and we have a convenient & effective program for you and your employees.



THE Y. SO MUCH MORE THAN A GYM

Blood Pressure Self Monitoring:

Reduces blood pressure and lowers risk for heart disease and stroke

LIVESTRONG® at the YMCA: Cancer Survivor wellness support

TOGETHERHOOD™: Strengthening our community by volunteering and giving back

YMCA's Diabetes Prevention Program:

Helps reduce risk of type 2 diabetes

Workplace Wellness Assessments:

Learn potential ways to incorporate wellness initiatives at your workplace

Lunch N' Learn Series: Build employee skills & boost morale with informal health & wellness sessions

YMCA Corporate Challenge: Allows employees to build a better team and camaraderie while being active and having fun



BENEFITS

- Worksite wellness programs build a sustainable, health focused culture
- Tracking participation provides reward system opportunities



POSITIVE EFFECTS

- Lower health care costs
- Happy workers
- Increases employee productivity
- Reduces stress
- Reduces absenteeism
- Increases bottom line
- Reduces employee turnover
- Improves morale
- Attracts & retains high-performing employees

WE'RE MORE THAN A GYM. WE'RE A CAUSE.

By introducing your employees to the benefits of a Y membership, you're giving them much more than a place to work out. The Y provides programs and opportunities in each of our three focus areas - Youth Development, Healthy Living, and Social Responsibility.



YOUTH DEVELOPMENT

Nurturing the potential of every child and teen

- Various summer programs including day camps & overnight camps
- Free age appropriate care for children ages 6 weeks to 11 years (Child Watch) and 6 to 11 years (Kids Club) for children on an active membership while parent is in the Y
- Before and After school care available at over 35 sites
- Teen Leadership Programs
- Supervised programs including homework help for middle schoolers
- Youth & Government teen program
- Youth Sports and Swimming
- Arts, Music, and Dance programs
- Healthy Cooking Classes



HEALTHY LIVING

Improving the nation's health and well-being

- Unrestricted access to all eight locations in Allen, Whitley and Wells Counties
- Unlimited participation in hundreds of free group exercise classes like Yoga, Pilates, Zumba®, Bootcamp, Cycling and Aqua Fitness for every fitness level
- Nationwide Membership allows Y members to visit any participating YMCA in the United States
- Corporate Wellness and Membership Programs
- Chronic disease programs including YMCA's Diabetes Prevention, Enhance®Fitness, LIVESTRONG® at the YMCA, & Blood Pressure Management
- Free health and wellness screenings and orientations
- Inclusive programs adapted for people of all abilities



SOCIAL RESPONSIBILITY

Giving back and providing support to our neighbors

- Financial assistance for YMCA membership and programs for those in need
- Training programs including Safety & Emergency Preparedness, CPR and First Aid Courses
- Volunteer opportunities such as home repairs, yard work, neighborhood clean ups and more Visit your local Y for details
- Personal and family growth opportunities like financial literacy, parenting courses, Turkey Trot, family game nights
- Programs designed to strengthen your faith and spiritual wellness such as bible studies and The Good Friday Breakfast
- International service trips to places such as Peru and Chile



FOR YOUTH DEVELOPMENT®
FOR HEALTHY LIVING
FOR SOCIAL RESPONSIBILITY

YMCA CORPORATE MEMBERSHIP PLAN

YMCA of Greater Fort Wayne



The YMCA Corporate Membership Plan helps employers improve the health and well-being of their workforce. By partnering with the Y, your employees have the opportunity to be part of a place where people can build stronger bonds, achieve greater work/life balance and become more engaged with their community.

Payroll Deduction Partnership:

- Employers can offer payroll deduction as a benefit to promote healthy lifestyles for employees.
- As a corporate partner with the Y, the Y contributes toward your employee's membership by waiving the \$75 enrollment fee.
- Free one-week passes are available anytime for an employee and their family to "try the Y" before making the commitment to join.
- Employer has a designated open enrollment month each year to enroll new employees into the plan.
- Employees receive all the great benefits of being a Y member and so much more!

2020 Corporate Rates:

Membership Type	Enrollment Fee	YMCA Contribution	Monthly Corporate Membership Fee
Adult	\$75.00 \$0	\$4.00	\$45.00
One Adult Household	\$75.00 \$0	\$4.25	\$55.25
Household	\$75.00 \$0	\$5.00	\$70.50

As a corporate partner, employers are encouraged to contribute toward their employee's health and well-being. For an employer who offers an additional contribution, employee usage reports can be provided by the Y upon request.

FREQUENTLY ASKED QUESTIONS



Q. IS THERE A FEE TO OFFER CORPORATE MEMBERSHIPS TO OUR EMPLOYEES?

A. No, the YMCA of Greater Fort Wayne does not charge employers a fee to setup and offer corporate memberships to employees.

Q. HOW DOES PAYMENT WORK?

A. Once a month, the YMCA invoices the employer for the number of employees that have YMCA memberships. The employer is responsible for the distribution of payroll deduction authorization forms to employees and the amount withdrawn from their pay check each pay period. Payments to the YMCA are made via check through the employer's bank account.

Q. WHAT IF OUR COMPANY WOULD LIKE TO SUBSIDIZE A PORTION OF OUR EMPLOYEES' YMCA MEMBERSHIPS?

A. GREAT! You would adjust the amount your organization withdraws from each pay period. We can also update your company's marketing to reflect this contributed amount. No hassle with extra paperwork or adjustments of a contract. We want to make this as easy as possible for you and your employees.

Q. IS IT A GOOD IDEA TO SUBSIDIZE A PORTION OF OUR EMPLOYEES' YMCA MEMBERSHIPS?

A. YES! Employee wellness programs help lower health care costs, reduce absenteeism and improve overall morale. Subsidizing a portion of your employees' YMCA membership fees encourages their involvement and will be viewed as a benefit of your organization. The average Return on Investment for Employee Wellness Programs is \$3.14 in benefits for every \$1 spent.

Q. IS MY COMPANY ABLE TO RECEIVE USAGE REPORTS FOR OUR EMPLOYEES THAT HAVE YMCA MEMBERSHIPS?

A. Yes, the YMCA is happy to provide usage reports to employers who subsidize a portion of their employee's membership fee. These reports are a great tool in determining if the memberships are being utilized; and can be used for contests or other employee incentives. For more ideas on how usage reports can be utilized for your company email us at HereForYou@fwymca.org.

Q. CAN AN EMPLOYEE TERMINATE THEIR MEMBERSHIP AT ANYTIME?

A. Employees have the right to stop their payroll deduction at any time, however, the YMCA does ask all members for a 12-month commitment when they join. If an employee stops their payroll deduction for their membership fees within the 12-month period the YMCA will follow up with them regarding future payments.

Q. WHAT IF AN EMPLOYEE LEAVES THE COMPANY OR IS TERMINATED?

A. Please notify the YMCA's Metropolitan office right away when any changes take place with an employee's deduction in order to ensure accurate invoicing. YMCA will follow up with employee regarding any future payments.

Q. HOW DO WE GET STARTED?

A. To get started, contact the YMCA Membership Development Director at 260.918.2149.



p: 260.565.9622
550 West Dustman Road
Bluffton, IN 46714

p: 260.422.6486
1020 Barr Street
Fort Wayne, IN 46802

p: 260.755.4949
5680 YMCA Park Drive West
Fort Wayne, IN 46835

p: 260.432.8953
10313 Aboite Center Road
Fort Wayne, IN 46804

p: 260.497.9996
10001 Dawsons Creek Blvd.
Fort Wayne, IN 46825

p: 260.447.4567
2323 Bowser Avenue
Fort Wayne, IN 46803

p: 260.755.4900
838 South Harrison Street
Fort Wayne, IN 46802

p: 260.244.9622
950 E. Van Buren Street
Columbia City, IN 46725

CAYLOR-NICKEL FOUNDATION FAMILY YMCA

CENTRAL BRANCH YMCA

JACKSON R. LEHMAN FAMILY YMCA

JORGENSEN FAMILY YMCA

PARKVIEW FAMILY YMCA

RENAISSANCE POINTE YMCA

SKYLINE YMCA

WHITLEY COUNTY FAMILY YMCA

Cardio Equipment
Free Weights
Adaptive Fitness Equipment

- Athletic Fields
- Chapel
- Climbing Wall
- Computer Lab
- Dance Studio
- Universal Changing Room(s)
- Game Room
- Group Ex Room(s)
- Gymnasium
- Indoor Track
- Kids Play Area
- Music Room
- Racquetball Courts
- Sauna
- Sensory Room
- Steam Room
- Teaching Kitchen
- Walking Trail
- Whirlpool

Indoor Pool(s)
Outdoor Pool
Splash Park

- Adaptive Programs
- Adult Sports & Leagues
- Arts & Music, Dance
- Before/After School Care
- Child Watch/Kids Club
- Day Camp
- Early Learning Center
- Group Exercise Classes
- Personal Training
- Swim Lessons
- Teen Activities
- Teen Leadership
- Volunteer Opportunities
- Family Activities
- Youth Sports

●	●	●	●	●	●	●	●
●	●	●	●	●	●	●	●
●	●	●	●	●	●	●	●

The image is a 15x8 grid of colored squares. The colors are in a gradient from dark purple on the left to bright cyan in the center, and back to dark purple on the right. White dots are placed on some of the squares, forming a pattern that resembles a stylized face or mask. The dots are arranged in a way that suggests a binary image, with the dots representing '1' and the colored squares representing '0'.

●	●	●	●	●	●		●
			●				
				●	●		

•	•	•	•	•	•		•
	•	•	•	•	•		•
		•	•	•	•		
•			•	•			•
•	•	•	•	•	•		•
•			•	•	•		•
•							•
•	•	•	•	•	•	•	•
•	•	•	•	•	•	•	•
•	•	•	•	•	•	•	•
	•	•	•	•	•		•
•	•	•	•	•	•	•	•
•	•	•	•	•	•	•	•
•		•	•	•	•		•